

# SAVUTE SAFARI LODGE

*Chobe National Park*



*Empowering Botswana Through Tourism*

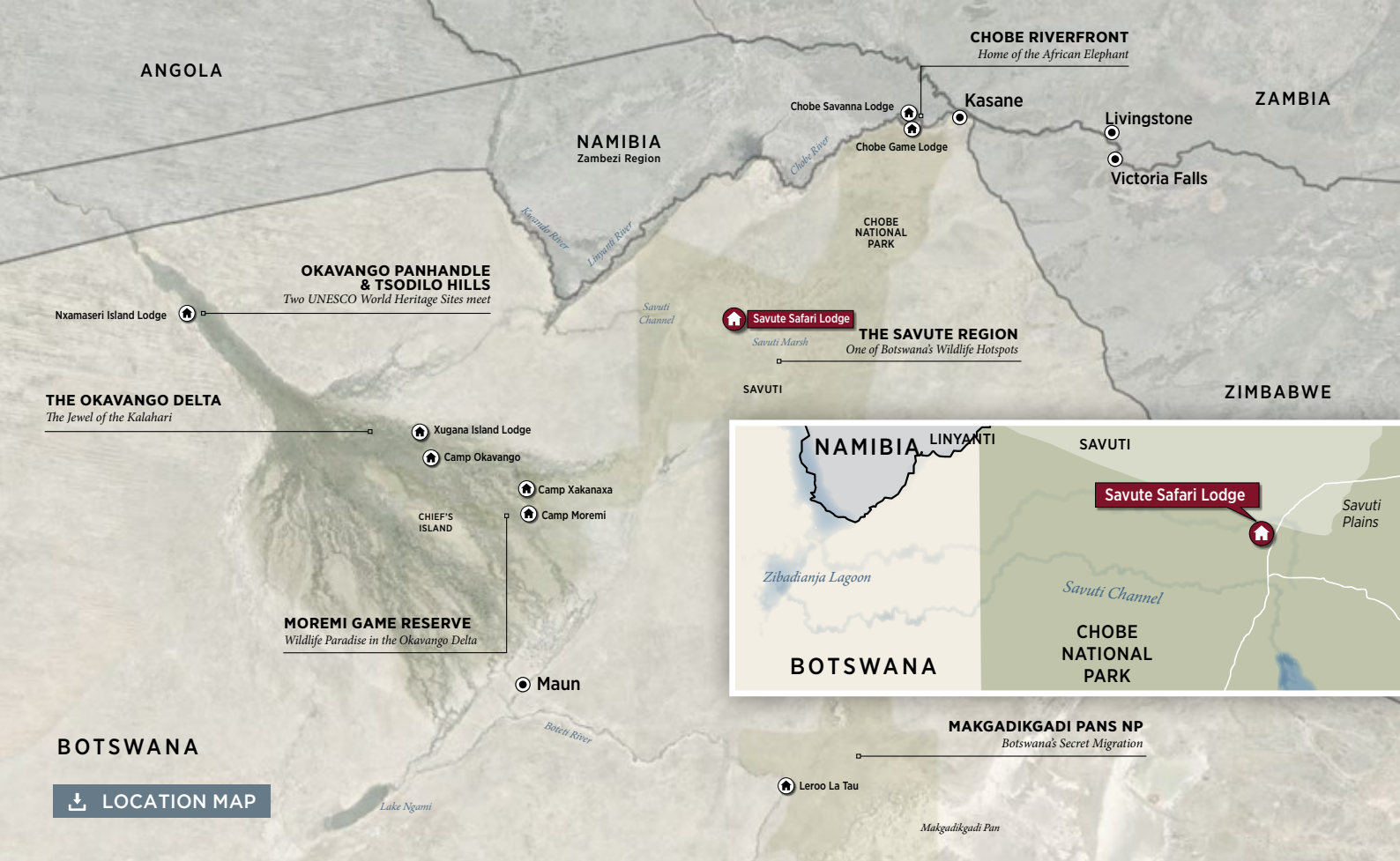


[www.desertdelta.com](http://www.desertdelta.com)

CAMP OKAVANGO | NXAMASERI ISLAND LODGE | XUGANA ISLAND LODGE | CAMP MOREMI | CAMP XAKANAXA  
CHOBE GAME LODGE | SAVUTE SAFARI LODGE | CHOBE SAVANNA LODGE | LEROO LA TAU

NOVEMBER 2021





↓ LOCATION MAP

Stretching from the Linyanti River all the way to Savute Marsh, the winding waterways of the Savute Channel have pumped life into the western section of Chobe National Park for thousands of generations. However, this fickle and unpredictable channel has a fascinating history of flooding and drying up, independently of good rainy seasons and flood levels elsewhere. The Savute region and the Savute Marsh in particular, is renowned for its intense predator encounters and exceptional game viewing making it one of Botswana's most popular wildlife destinations.



↓ CAMP LAYOUT





## THE CAMP FACILITIES

<b>ROOMS</b>	11 Luxury Chalet and 1 Family Chalet accommodating a maximum of 24 guests.
<b>PILOT/GUIDE</b>	1 x Pilot/Guide Room
<b>RATES</b>	Fully inclusive of all meals, scheduled safari activities, local drinks (including alcoholic drinks, excluding premium brands) and park entrance fees.
<b>DINING</b>	Various indoor and outdoor dining locations.
<b>CAMP FIRE</b>	Located in front of the lodge overlooking the Savute Channel.
<b>SWIMMING POOL</b>	On a separate deck with easy access from the main area.
<b>VIEWING DECK</b>	An expansive, shaded deck overlooking the Savute Channel, ideal for enjoying the varied wildlife which frequents the channel and waterhole in front of the lodge.
<b>BAR</b>	Fully stocked self service bar.
<b>CURIO SHOP</b>	Accepts cash and credit card payments.
<b>LAUNDRY</b>	Daily, inclusive laundry service available.
<b>WATER</b>	Reverse osmosis water treatment plant supplies drinking water (bottled water on request).
<b>ELECTRICITY</b>	24-hour power supplied by solar plant, backed up by generator. 220V AC plug's in guest rooms.
<b>WI-FI</b>	Connection to Wi-Fi is available in the rooms only. Wi-Fi is via remote satellite link up and constant connectivity is not guaranteed.
<b>TELEPHONE</b>	No telephone communication available. The lodge has a satellite phone and radio for emergencies.
<b>CHILDREN</b>	Children from 6 years and older. See Desert & Delta Safaris child policy for more information.



### CAMP IMAGES

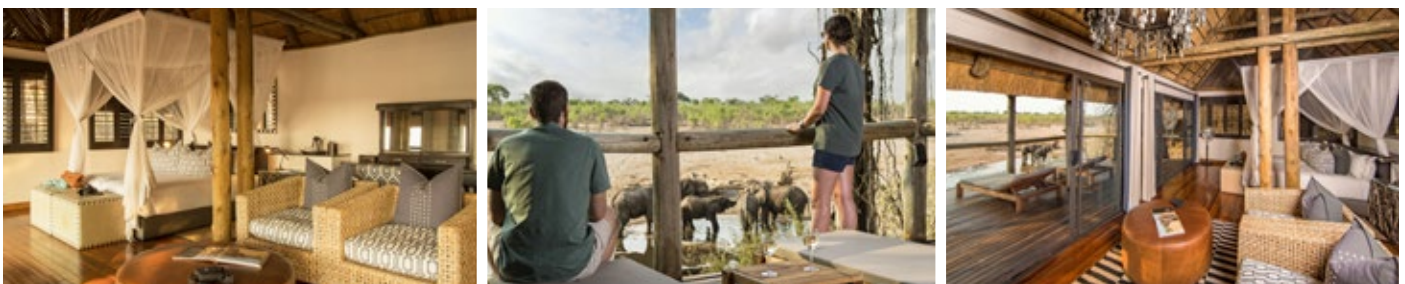






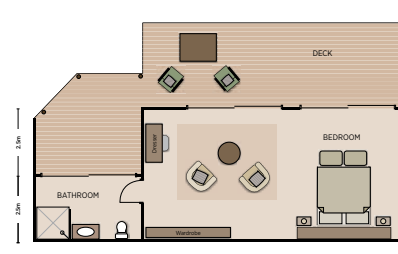
## ACCOMMODATION

To ensure a private and relaxing environment, Savute Safari Lodge accommodates just twenty-four guests in eleven thatched chalets built of local timber and one family room which consists of two double bedrooms. The chalets, which have been elegantly furnished in calm neutral tones to blend with the natural environment, feature expansive private decks, a combined bedroom and lounge area and en suite facilities.

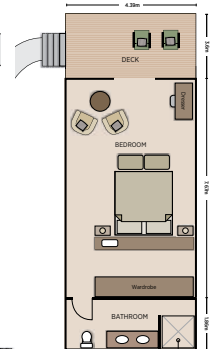


ROOM FACILITIES	
<b>RAISED DECKS</b>	Each chalet is built of local timber and is on raised decks
<b>PRIVATE VIEWING DECK</b>	Offers expansive private viewing decks.
<b>EN-SUITE BATHROOM</b>	En-suite showers, hand basin and toilet facilities.
<b>FANS</b>	Fans are available in all rooms - there is no air-conditioning in the rooms.
<b>POWER</b>	220V multi adaptor plugs for charging photographic equipment.
<b>SAFE</b>	A small pass-code protected safe for storing valuables.
<b>FLASHLIGHT</b>	For use in the rooms at night.
<b>UMBRELLA</b>	In case of rain.
<b>AIR HORN</b>	For use in case of an emergency.
<b>HAIRDRYER</b>	A small hairdryer is available in each room.
<b>BATHROOM AMENITIES</b>	A range of bathroom amenities including biodegradable soaps, shower gels etc.
<b>TEA &amp; COFFEE FACILITIES</b>	A small kettle with tea & coffee available.

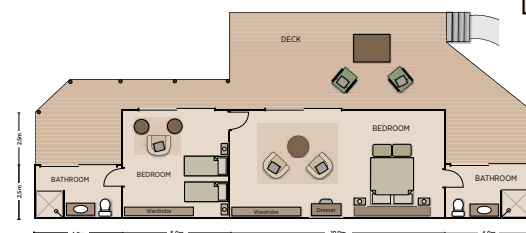
**STANDARD ROOM TYPE 1**



**STANDARD ROOM TYPE 2**



**FAMILY ROOM**



[CAMP IMAGES](#)

[PLANS](#)







## ACTIVITIES



### GAME DRIVES

Game Drives from the lodge explore the Savute region in open 4x4 safari vehicles. Many excursions will incorporate a visit to the Savute Marsh to give you a chance to see the historic presence of the Savute Channel at the marsh against a backdrop of teeming wildlife.

 EXPERIENCE IMAGES



### TYPICAL DAY ON SAFARI

Please note the below suggested daily program is flexible based on the guests interests, travel times and availability of activities.

WINTER TIMES	SUMMER TIMES	ACTIVITY
05:30	05:00	Early morning wake-up call.
06:00	05:30	Light continental breakfast served in the dining area.
06:30	06:00	Leave for morning activity, (approximately 3 - 4 hours).
11:30	11:00	Brunch is served at the dining area.
SIESTA TIME		Relax and enjoy the lodge facilities and surroundings.
15:00	15:30	Afternoon tea is served on the open air patio.
15:30	16:00	Depart for afternoon activity (approximately 3 hours).
18:30	19:00	Arrive back at the lodge.
19:30	20:00	Dinner is served at the dining area.







## ACCESS TO SAVUTE SAFARI LODGE

Savute Safari Lodge is accessed by light aircraft transfer or by 4WD vehicles only. The airstrip is owned by Desert & Delta Safaris, a Chobe Holdings Company. Flights to and from Savute Safari Lodge are scheduled based on the travellers itinerary. Once at the airstrip there is a short road transfer of approximately 25 minutes to camp.

### AIRSTRIIP DETAILS

STRIP GPS CO-ORDINATES	S 18° 31' 16.84 E 24° 04' 33.39
CAMP GPS CO-ORDINATES	S 18° 33' 54.17 E 24° 03' 26.86
LENGTH	1000m
LICENSE	CAAB Licensed Class B airstrip accommodating aircrafts up to MAUW 5700kg's (Cessna Caravan).
PRIVATE CHARTERS	Prior consent is required before landing private aircraft on the airstrip for Desert & Delta Safaris travellers.



Maun

### ESTIMATED FLIGHT TIMES Between Camps & Airports

25	Camp Okavango		
30	5	Xugana Island Lodge	
20	10	10	Camp Moremi / Camp Xakanaxa
40	30	25	25 Savute Safari Lodge
30	45	45	40 50 Leroo La Tau
60	35	35	45 60 90 Nxamaseri Island Lodge
70	60	60	55 30 65 95 Kasane

PLEASE NOTE: Drone use is strictly prohibited at Chobe Game Lodge and inside the Chobe National park, in accordance with National Park laws of Botswana.



Empowering Botswana Through Tourism

#### RESERVATIONS OFFICE

TELEPHONE [+267] 680 1494  
E-MAIL info@desertdelta.com

View Desert & Delta Safaris Video

#### MARKETING OFFICE

TELEPHONE [+267] 686 1559  
E-MAIL marketing@desertdelta.com  
ADDRESS Private Bag 310, Maun, Botswana

www.desertdelta.com